

# PRIME DAILY

January 6, 2026



## Dow Reaches Record as Energy Stocks Surge Following U.S. Strike on Venezuela

Wall Street climbed on Monday, with the Dow Jones Industrial Average hitting an all-time high driven by surging energy shares after a U.S. military operation captured Venezuelan President Nicolás Maduro.

Investors anticipate the move will grant U.S. companies access to the world's largest oil reserves. The Trump administration plans to meet with oil executives this week to discuss boosting Venezuelan production.

Venezuela holds the world's largest proven oil reserves, but output has collapsed in recent decades due to mismanagement, limited foreign investment following the nationalisation of the industry, and international sanctions.

Energy stocks led Monday's gains, with Chevron—a leading private oil operator in Venezuela — surging 5.1%. Financial stocks also posted strong advances, helping push the Dow to its record close.

Oil prices fell on Tuesday as traders weighed the prospect of increased Venezuelan crude output, adding to expectations of ample global supply amid weak demand.

On the currency front, the Indian rupee weakened for the fourth consecutive session, depreciating by 8 paise to 90.28 against the US dollar. The currency has now declined in nine of the past ten trading sessions, weighed down by uncertainty over potential trade negotiations between Washington and New Delhi.

Asian equities are trading at fresh record highs today, with MSCI's broad Asia-Pacific gauge extending its rally, led by Japanese and Hong Kong benchmarks near new peaks.

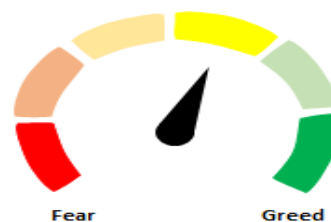
Nifty ended its three-day winning streak on Monday, slipping 89 points to close at 26,239.

Despite profit-booking at higher levels, the Nifty held comfortably above its 5-day EMA, currently placed at 26188, signalling that the short-term bullish undertone remains intact.

As long as the index remains above the crucial support zone of 26,100, the near-term trend is expected to stay positive. On the upside, a high of 26,373 is likely to act as an immediate resistance. A decisive move above this level could rekindle buying momentum, paving the way for a potential rally towards 26,500.

Foreign investors have continued to cover their short positions in the derivatives markets.

**Indian markets are positioned to open higher on positive global cues.**



| Global Equity Indices |        |             |          |
|-----------------------|--------|-------------|----------|
|                       | Close  | Abs. Change | % Change |
| Indian Indices        |        |             |          |
| Sensex                | 85,440 | -322.4 ▼    | -0.38%   |
| Nifty                 | 26,250 | -78.3 ▼     | -0.30%   |
| Midcap                | 61,266 | -100.2 ▼    | -0.16%   |
| Small cap             | 17,926 | 94.4 ▲      | 0.53%    |
| US Indices            |        |             |          |
| Dow Jones             | 48,977 | 594.8 ▲     | 1.23%    |
| S&P 500               | 6,902  | 43.6 ▲      | 0.64%    |
| Nasdaq                | 23,396 | 160.2 ▲     | 0.69%    |
| European Indices      |        |             |          |
| FTSE                  | 10,005 | 53.4 ▲      | 0.54%    |
| DAX                   | 24,869 | 329.4 ▲     | 1.34%    |
| CAC                   | 8,212  | 16.3 ▲      | 0.20%    |
| Asian Indices         |        |             |          |
| Shanghai              | 4,023  | 54.6 ▲      | 1.38%    |
| Hang Seng             | 26,347 | 8.8 ▲       | 0.03%    |
| Nikkei                | 52,166 | 1826.5 ▲    | 3.63%    |

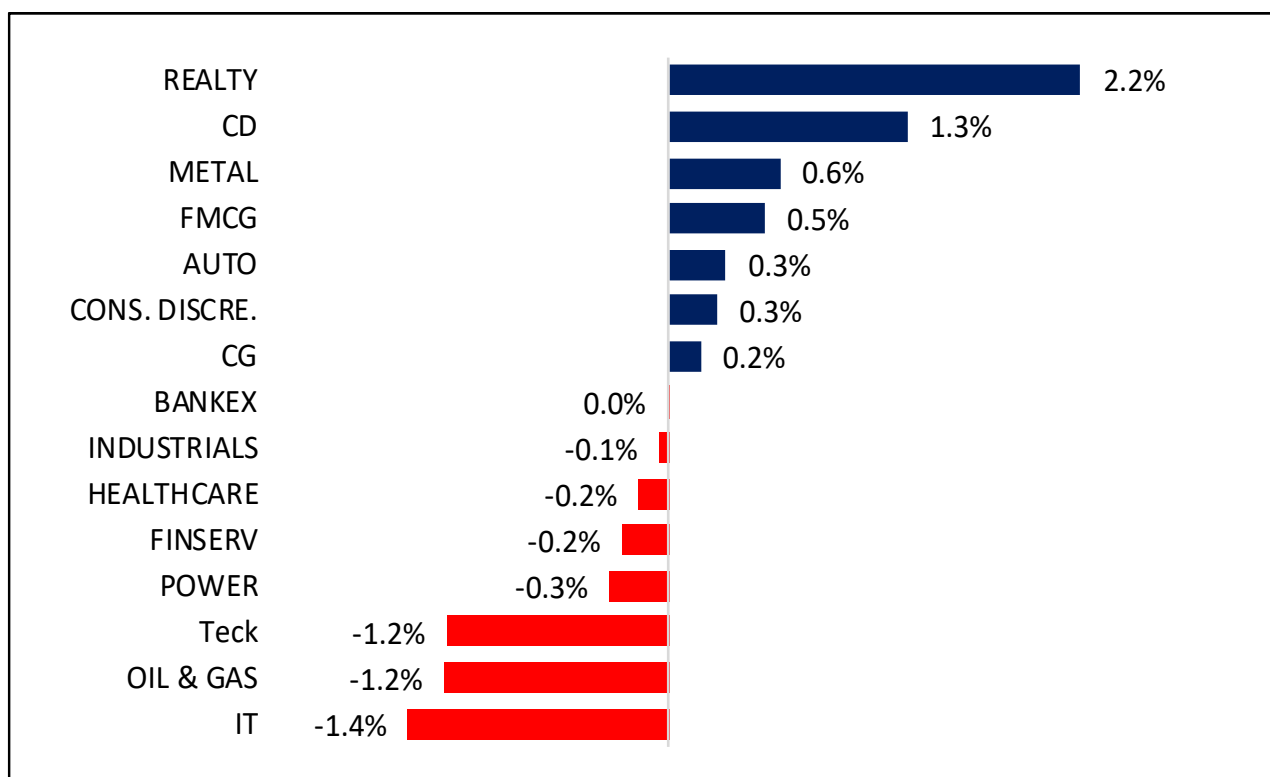
| Indices Futures  |        |             |          |
|------------------|--------|-------------|----------|
|                  | Close  | Abs. Change | % Change |
| IFSC Nifty       |        |             |          |
| IFSC Nifty       | 26,388 | 66.5 ▲      | 0.27%    |
| US Indices       |        |             |          |
| Dow Jones        | 49,252 | 24.0 ▲      | 0.05%    |
| S&P 500          | 6,950  | 6.0 ▲       | 0.09%    |
| Nasdaq           | 25,615 | 37.5 ▲      | 0.15%    |
| European Indices |        |             |          |
| FTSE             | 10,059 | 16.8 ▲      | 0.17%    |
| DAX              | 25,031 | 30.0 ▲      | 0.12%    |
| Asian Indices    |        |             |          |
| Shanghai         | 4,742  | 27.2 ▲      | 0.58%    |
| Hang Seng        | 26,847 | 283.0 ▲     | 1.07%    |
| Nikkei           | 52,255 | 37.5 ▲      | 0.07%    |

## Nifty50 Index Contributors

| Top Five (Positive Contributors) |        |          |
|----------------------------------|--------|----------|
| Stock                            | Points | % Change |
| ICICIBANK                        | 25.2   | 0.10     |
| AXISBANK                         | 11.9   | 0.05     |
| BEL                              | 8.4    | 0.03     |
| HINDUNILVR                       | 7.0    | 0.03     |
| SBIN                             | 6.0    | 0.02     |

| Bottom Five (Negative Contributors) |        |          |
|-------------------------------------|--------|----------|
| Stock                               | Points | % Change |
| HDFCBANK                            | -80.83 | -0.31    |
| INFY                                | -26.11 | -0.10    |
| RELIANCE                            | -21.02 | -0.08    |
| TCS                                 | -7.75  | -0.03    |
| HCLTECH                             | -7.54  | -0.03    |

## BSE Sectoral Leaders & Laggards

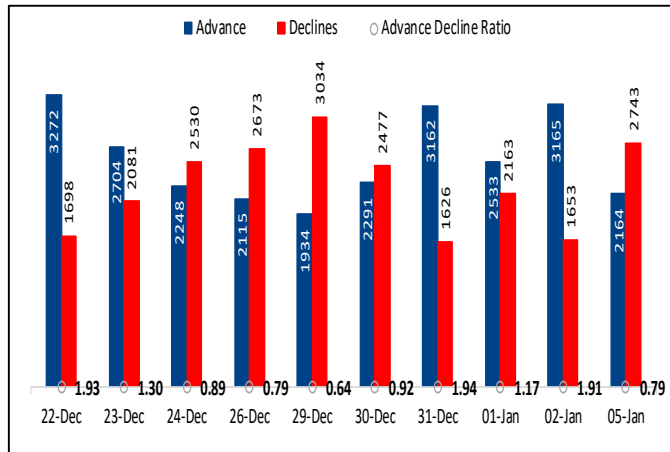


## Nifty50 Index Top Pops & Drops

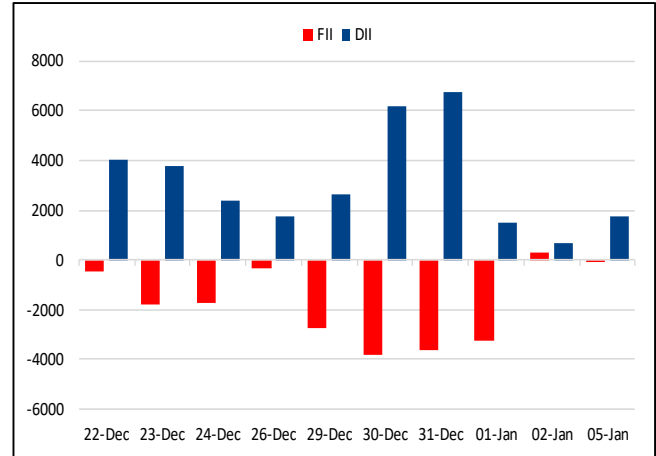
| Nifty50 Top Five Gainers |         |          |            |
|--------------------------|---------|----------|------------|
| Symbol                   | LTP     | % Change | Volume     |
| NESTLEIND                | 1314.6  | 2.73     | 2,397,082  |
| BEL                      | 413.8   | 2.64     | 26,097,635 |
| EICHERMOT                | 7482.5  | 2.02     | 426,798    |
| ULTRACEMCO               | 12087.0 | 1.58     | 302,803    |
| TATASTEEL                | 185.7   | 1.55     | 30,646,009 |

| Nifty50 Top Five Losers |        |          |            |
|-------------------------|--------|----------|------------|
| Symbol                  | LTP    | % Change | Volume     |
| HDFCBANK                | 977.5  | -2.41    | 27,647,379 |
| WIPRO                   | 263.3  | -2.12    | 7,006,599  |
| INFY                    | 1606.4 | -2.07    | 5,917,885  |
| HCLTECH                 | 1607.6 | -1.99    | 3,245,802  |
| ONGC                    | 238.1  | -1.4     | 21,201,434 |

## BSE Advance & Declines



## Institutional Activities



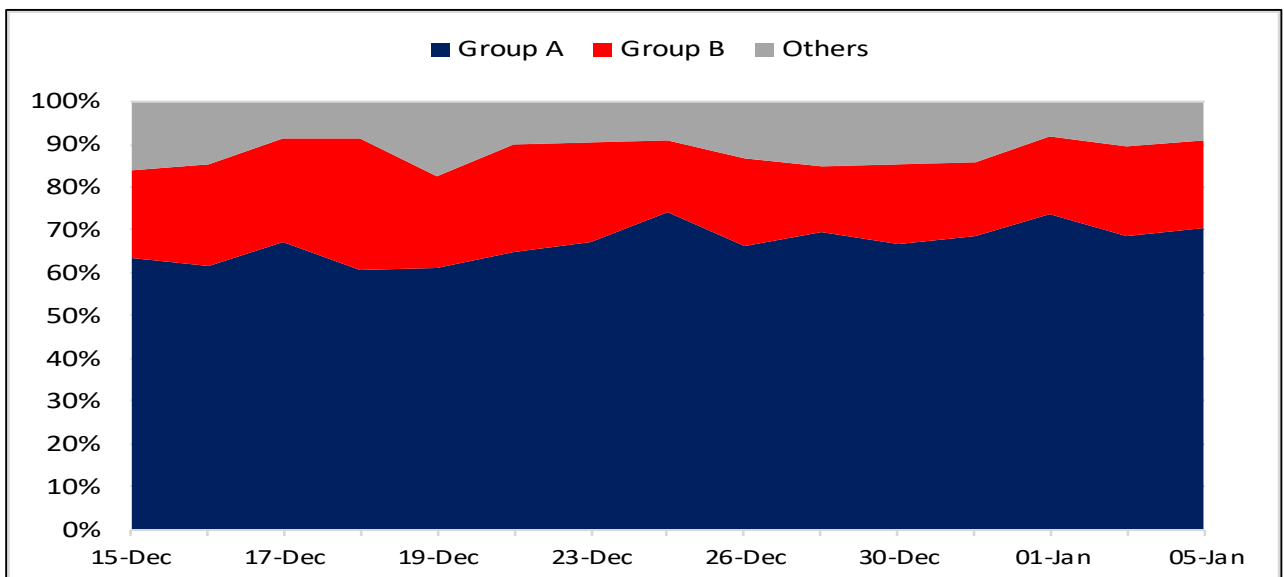
## 52 Week High Stocks

|   | 05-Jan-26 | 02-Jan-26    |
|---|-----------|--------------|
| BSE Universe                            | 272       | 234          |
| BSE Group A Stocks Hitting 52 Week High |           |              |
| Stocks                                  | Price     | 52 Week High |
| AETHER                                  | 946.8     | 957.05       |
| AIAENG                                  | 4073.9    | 4162.45      |
| ASHOKLEY                                | 187.7     | 191.8        |
| AUBANK                                  | 1014.3    | 1025.65      |
| BAJAJ-AUTO                              | 9499.0    | 9677.95      |




## 52 Week Low Stocks

|  | 05-Jan-26 | 02-Jan-26   |
|--|-----------|-------------|
| BSE Universe                           | 161       | 98          |
| BSE Group A Stocks Hitting 52 Week Low |           |             |
| Stocks                                 | Price     | 52 Week Low |
| COHANCE                                | 512.9     | 511.35      |
| CONCORDBIO                             | 1338.6    | 1296.75     |
| MANYAVAR                               | 571.8     | 568.8       |
| EPIGRAL                                | 1189.4    | 1154        |
| TATACHEM                               | 746.4     | 745         |

## BSE Cash Market Turnover Participant-wise



## News Highly Sensitive to Stock Price

| Impact  | Stock             | News  |
|---|-------------------|---|
|  | KSH International | Revenue for the quarter increased 50.7% YoY at Rs 712 crore. EBITDA was up 74.2% YoY at Rs 46.1 crore. EBITDA per ton stood at Rs 65,500 vs. Rs 46,100. Net profit surged 129% YoY at Rs 29.6 crore.  |
|  | L&T Finance       | Retail disbursements for Q3 FY26 are estimated at Rs 22,690 crore, marking a sharp 49% YoY increase. Retail loan book expanded to an estimated Rs 1.11 lakh crore, registering a YoY growth of about 21%.   |
|  | Waaree Energies   | Waaree Energy Storage Solutions Pvt Ltd ("WESSPL"), a subsidiary of Waaree Energies Ltd, announced the successful completion of a major funding round totalling ~Rs 1,003 Crores from a cluster of strategic investors, including family offices, high-net-worth individuals (HNIs), and institutional backers. This fund raise is a part of the announced Capex of ~Rs 10,000 Crores for the establishment of a 20 GWh advanced lithium-ion cell and battery pack manufacturing plant. |

| Stock                 | News  |
|-----------------------|---|
| <b>LG Electronics</b> | <p>LG Electronics has signed and concluded an Advance Pricing Agreement (APA) with the Central Board of Direct Taxes (CBDT). Following the signing of the Advance Pricing Agreement, LG Electronics India said contingent liabilities of Rs 172.44 crore related to direct taxes will become nil. In addition, a contingency amount of Rs 315.30 crore linked to royalty payments to its promoter, LG Electronics Inc., Korea, will also become nil.</p>  |
| <b>AWL Agri</b>       | <p>AWL Agri Business Ltd reported low single-digit volume growth for the quarter ended December 31, 2025 (Q3FY26), led by higher volumes in the edible oil and food &amp; FMCG segments, even as overall performance was impacted by a decline in castor and de-oiled cakes under the industry essentials segment. The company said festive demand remained muted during the quarter as trade operated with lean inventory levels.</p>  |
| <b>Trent</b>          | <p>Trent reported 17% year-on-year growth in revenue to Rs 5,220 crore for the third quarter of the current financial year. The standalone revenue from the sale of products, excluding GST, for the same quarter last year stands at Rs 4,466 crore.</p> <p>These were supported by an increase in the footprint of its retail brands Westside and Zudio. As of the end of December 2025, Trent's total store portfolio reached a substantial scale, led by 854 Zudio stores, which now includes an international presence with stores in four locations in the UAE.</p>   |
| <b>Dabur</b>          | <p>Dabur said it saw early signs of demand recovery during the quarter ended December 31, 2025 (Q3FY26), aided by GST rate revisions and improving consumer sentiment, even as distributors and retailers focused on liquidating higher-priced inventory during October.</p> <p>Within the India business, Dabur said it expects the home &amp; personal care segment to grow in double digits, driven by strong performance in the hair oils and oral care categories. Key brands expected to record healthy, volume-led growth. The healthcare business is expected to see a sequential improvement in growth</p> |
| <b>Axis Bank</b>      | <p>Advances stood at Rs 11.71 lakh crore, up 14.1% YoY. Total deposits increased 15% YoY to Rs 12.61 lakh crore. CASA deposits at the end of the quarter stood at Rs 4.93 lakh crore, up 13.9% YoY.</p>   |
| <b>DCX Systems</b>    | <p>Company received an order worth Rs 11.33 crore from Rafael Advanced Defence Systems Limited, Israel.</p>   |



| Stock                             | News   |
|-----------------------------------|--|
| <b>Ddev Plastiks</b>              | Board approved the proposal to venture into the Battery Energy Storage System (BESS) business within the Renewable Energy Sector. Company proposes to launch a multi-phase BESS manufacturing program aimed at catering to Utilities, Commercial & Industrial, and Residential segments. As part of Phase 1, the Company will establish a 5 GWh BESS manufacturing facility by FY27, with an initial capital outlay of approximately Rs 150-200 crores.  |
| <b>Hi Tech Pipes</b>              | Hi-Tech Pipes announced the commencement of commercial production at its greenfield manufacturing facility at Kathua, J&K. The Kathua facility has an installed capacity of 80,000 tonnes per annum (MTPA) and is designed to manufacture ERW steel pipes as well as coated and other value-added steel products.  |
| <b>Bondada Engineering</b>        | Bondada Engineering has received a Letter of Award (LoA) from AP TRANSCO (Transmission Corporation of Andhra Pradesh) for the development of a large-scale Standalone Battery Energy Storage System (BESS) project.  |
| <b>Tata Power</b>                 | Tata Power has added more than 1 GWp capacity, showing a remarkable 127% YoY growth over 444.78 MWp installations achieved in the corresponding period of FY25 (9M).<br>Customer adoption accelerated sharply, with 1.7 lakh new customers added in FY26 (9M), representing an 345% YoY increase compared to the same period last year.<br>Q3 FY26 marked a breakout quarter, with 58,476 installations and 372 MWp capacity added, recording an exceptional 242% YoY growth versus 17,092 installations in Q3 FY25. |
| <b>Utkarsh Small Finance Bank</b> | Gross Loan Portfolio declined 3.9% YoY and 1.9% QoQ at Rs 18,306 crore. JLG portfolio was down 34% YoY and 15.7% QoQ at Rs 6419 crore. Non-JLG portfolio increased 27.5% YoY and 7.7% QoQ at Rs 11,888 crore.<br>Total deposits were higher by 4.5% YoY at Rs 21,087 crore. Retail term deposits were up 23.8% YoY and 3% QoQ at Rs 12,586 crore. CASA deposits rose 16.1% YoY to Rs 4,611 crore and CASA ratio improved 100 bps QoQ to 21.9%.   |
| <b>Kotak Mahindra Bank</b>        | Net advances at the end of Q3FY26 stood at Rs 4,80,229 crore, registering a year-on-year growth of 16.0%. Total deposits rose 14.6% YoY to Rs 5,42,638 crore. CASA deposits rose 11.9% YoY while CASA ratio declined ~100 bps to 41.31%.   |
| <b>Ritco Logistics</b>            | Ritco Logistics Ltd. reports strong growth with new transportation contracts valued at approximately Rs.205 crore secured in December 2025.  |

| Stock                                   | News   |
|---|--|
| <b>ONGC</b>                             | Oil and Natural Gas Corporation has partnered with Japanese shipping major Mitsui OSK Lines. This collaboration aims to boost ONGC's specialized energy transport capabilities. Joint ventures will operate Very Large Ethane Carriers. These vessels will transport ethane from the United States for ONGC Petro additions Limited. The initiative supports national self-reliance and maritime infrastructure development.   |
| <b>MOIL</b>                             | Moil Ltd. reports its best-ever production performance for Q3 and the first nine months of FY26, achieving 4.77 lakh tonnes of manganese ore in Q3, a 3.7% increase year-over-year, and a total of 14.21 lakh tonnes for the nine-month period, up 6.8%.   |
| <b>Allcargo Terminals</b>               | Allcargo Terminals Ltd. Reports a significant increase in CFS volumes for December 2025, reaching 61.2'000 TEUs, which is an 18% rise compared to December 2024 and an 11% increase from November 2025.  |
| <b>Metropolis Healthcare</b>            | Revenue growth at ~26% on a YoY basis including revenues from Core Diagnostics, Scientific Pathology (Scientific), Agra, Dr. Ahuja's Pathology & Imaging Center (DAPIC), Dehradun and Dr. RS Patil's Ambika Pathology Laboratory, Kolhapur (Ambika Pathology).<br>B2C revenues registered a YoY growth of 18% and B2B revenue growth stood at ~37% on the back of addition of wallet share among customers especially for specialty segment & on account of higher contribution of B2B business in Core Diagnostics.<br>EBITDA margins for the quarter recorded year-on-year expansion, despite Q3 being a seasonally weaker period for the diagnostic industry. |
| <b>Markolines Pavement Technologies</b> | Markolines Pavement Technologies Limited has received work multiple work orders from its clients cumulatively amounting to Rs.12.32 crore (inclusive of GST) for execution of various works.   |
| <b>Highway Infrastructure</b>           | Highway Infrastructure Limited has received the Letter of Acceptance (LoA) of Rs 32 crore for operation at Jawar Fee Plaza at Km 37.100 of Mathura to Devinagar Bypass in the state of Uttar Pradesh. The Letter of Award (LoA) was issued by National Highways Authority of India (NHAI) on 5th January, 2026.  |



| Stock                          | News   |
|--------------------------------|--|
| <b>ESAF Small Finance Bank</b> | Gross advances increased 13.06% YoY to Rs 20,680 crore. Total deposits rose 7.10% YoY to Rs 24,006 crore. The CASA ratio improved to 25.12% as of December 31, 2025, from 24.95% a year earlier. Secured advances constituted 63.33% as compared to 45.33% a year earlier.   |
| <b>IndusInd Bank</b>           | IndusInd Bank reported a sequential decline in loans for a fourth straight quarter, reflecting continued pressure on the private lender's growth. Loans dropped 2.2% quarter-on-quarter in the October-December period, while deposits rose 1.1%, it said. On a year-on-year basis, loans fell 13.1%, while deposits dropped 3.8%. CASA ratio declined to 30.3% from 30.7% in the previous quarter and 34.9% a year earlier. |
| <b>Suraj Estate</b>            | Suraj Estate Developers Limited announced a strong sales for its landmark commercial project, One Business Bay, launched in mid November 2025. The company has achieved a sale of an area of 40,000 sq. ft. within 45 days of the launch of the project which translates to a GDV of Rs 200 crores out of the total estimated project GDV of Rs 1,200 crores.  |

## Key Events

### UK food prices and shop price inflation pick up at end of 2025, survey shows

British store chains raised their prices more quickly last month and they might struggle to avoid further increases in 2026 due to higher costs, the British Retail Consortium said.

Annual shop price inflation rose to 0.7% in December, slightly above the 0.6% increase in the 12 months to November but in line with its three-month average, the BRC said.

Food inflation of 3.3% in annual terms last month was up from 3.0% in November but prices for non-food items fell by 0.6%, the same pace of decline as in the previous month.

### US factory sector contracts for 10th straight month in December

US manufacturing activity slumped to a 14-month low in December, with new orders contracting further and input costs grinding higher as the sector continued to bear the imprint of President Donald Trump's import tariffs.

The Institute for Supply Management survey suggested a recovery was unlikely in the near-term, but economists were hopeful of a turnaround this year as Trump's tax cuts took effect.

Trump has said the tariffs are bringing in hundreds of billions of dollars in new revenue to the U.S. Treasury and that they are improving U.S. economic security.

### UK consumer borrowing rises by most since November 2023

British consumer borrowing rose by the most in two years in November, Bank of England data showed on Monday, suggesting household demand remained solid ahead of finance minister Rachel Reeves' budget.

Consumer borrowing grew by a net 2.08 billion pounds (US\$ 2.79 billion) during the month, the most since November 2023 and more than any forecast in a Reuters poll of economists.

The increase was above October's 1.713 billion-pound rise, taking the annual rate of consumer credit growth to 8.1%, the fastest since the 12 months to May 2024.

## Chart with Interesting Observations

### Metals & Commodities Signal a Renewed Downtrend for the US Dollar

- Metals & commodities are flashing warning signs for the US dollar, suggesting another leg lower may lie ahead. Despite a modest rebound against major FX peers in the second half of 2025, the US Dollar Index still logged a steep 9.4% annual decline—its worst performance in eight years—underscoring deeper structural vulnerabilities. Eye-watering rallies across gold, silver, copper, and other commodities have steadily chipped away at the dollar's credibility, revealing persistent concerns about inflation, debt, and long-term purchasing power. The scale of these moves points to more than short-term speculation; they reflect growing global unease with the greenback's role as the dominant store of value.
- That loss of confidence was most evident in gold's 65% surge in 2025—its strongest rally since 1979—while silver soared nearly 150% and copper climbed over 40% in a standout year for industrial metals. Volatile price swings late in the year showed speculators aggressively positioning against fiat currencies, particularly the dollar. This backdrop sets the stage for renewed USD weakness, not only versus precious metals but also against select currencies. Metals and commodities continue to offer compelling upside relative to the dollar, while commodity-linked currencies, along with the yen and the yuan—both trading well below long-term averages—are likely to regain attractiveness as this trend unfolds.

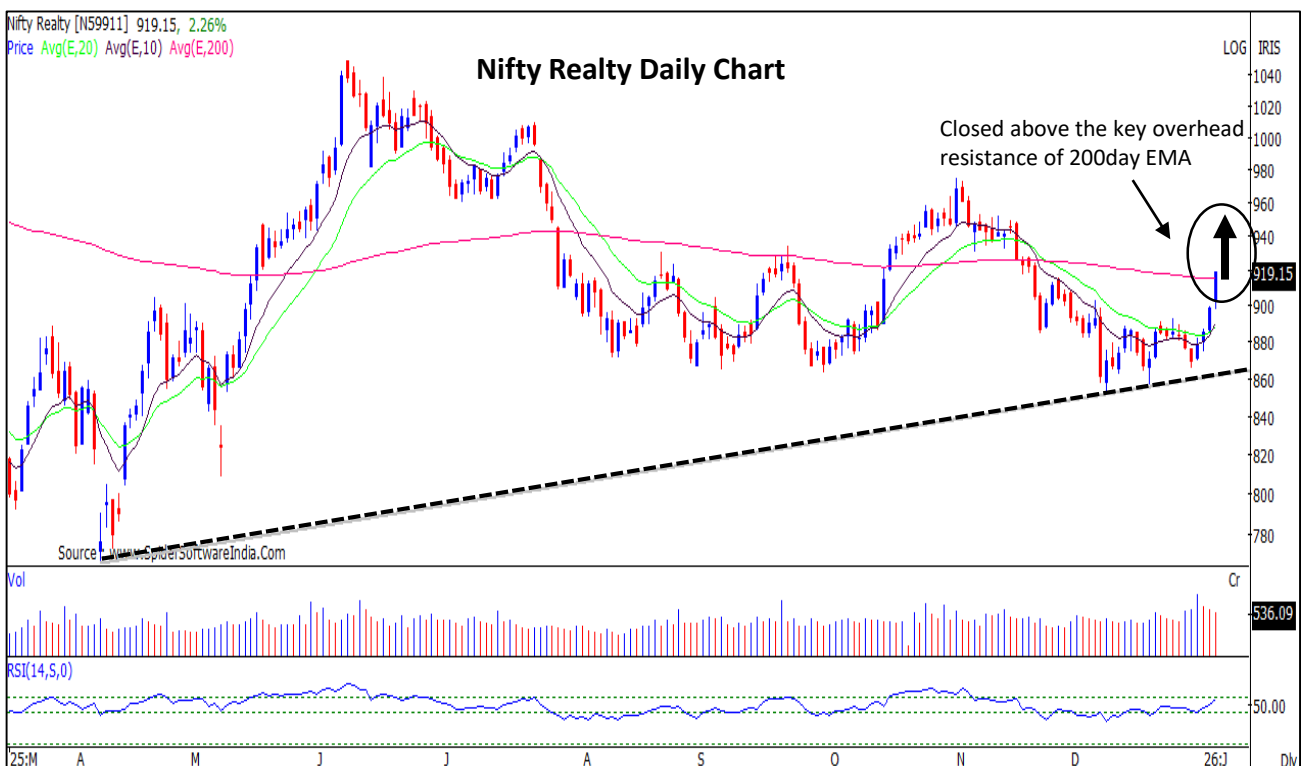
#### US Dollar Index vs US 2 Year Yield Spread to G7



**Nifty : The market is in a consolidation mode post decisive breakout. Higher possibility of bounce back from near the crucial support of 26200-26150**



**Nifty Realty : Formation of important bottom reversal pattern. Outperformance of selective Realty stocks could be continued**



## F&O Highlights

### PUT WRITING WAS SEEN AT 26100-26200 LEVELS

#### Create longs with the SL of 26200 levels

- The Nifty index ended its three-day winning streak on Monday, slipping 89 points to close at 26,239. The session began on a positive note, opening 5 points higher, and extended gains during the first two hours of trade. However, selling pressure intensified after 11:15 a.m., dragging the Nifty more than 150 points from its intraday high to hit a low of 26,210 around 2:30 p.m.
- Short Build-Up was seen in the Nifty Futures where Open Interest rose by 1.08% with Nifty falling by 0.30%.
- Long Unwinding was seen in the Bank Nifty Futures where Open Interest fell by 2.75% with Bank Nifty falling by 0.18%.
- Nifty Open Interest Put Call ratio fell to 1.00 levels from 1.46 levels.
- Amongst the Nifty options (06-Jan Expiry), Call writing is seen at 26400-26500 levels, indicating Nifty is likely to find strong resistance in the vicinity of 26400-26500 levels. On the lower side, an immediate support is placed in the vicinity of 26100-26200 levels where we have seen Put writing.
- Short covering was seen by FII's' in the Index Futures segment where they net bought worth 401 cr with their Open Interest going down by 2527 contracts.

| Index          | Expected Trend | Prev. Close | Buy/Sell | Stop Loss | Target |
|----------------|----------------|-------------|----------|-----------|--------|
| NIFTY FUT      | UP             | 26331.30    | BUY      | 26200     | 26500  |
| BANK NIFTY FUT | UP             | 60173.00    | BUY      | 59900     | 60500  |

| Nifty 50 Snapshot   |           |           |        |
|---------------------|-----------|-----------|--------|
|                     | 05-Jan-26 | 02-Jan-26 | % Chg. |
| Nifty Spot          | 26250.30  | 26328.55  | -0.30  |
| Nifty Futures       | 26331.30  | 26455.40  | -0.47  |
| Premium/ (Discount) | 81.00     | 126.85    | N.A.   |
| Open Interest (OI)  | 1.53      | 1.52      | 1.08   |
| Nifty PCR           | 1.00      | 1.46      | -31.73 |

| Bank Nifty Snapshot |           |           |        |
|---------------------|-----------|-----------|--------|
|                     | 05-Jan-26 | 02-Jan-26 | % Chg. |
| Bank Nifty Spot     | 60044.20  | 60150.95  | -0.18  |
| Bank Nifty Futures  | 60173.00  | 60341.00  | -0.28  |
| Premium/ (Discount) | 128.80    | 190.05    | N.A.   |
| Open Interest (OI)  | 0.15      | 0.15      | -2.75  |
| Bank Nifty PCR      | 1.14      | 1.18      | -3.48  |

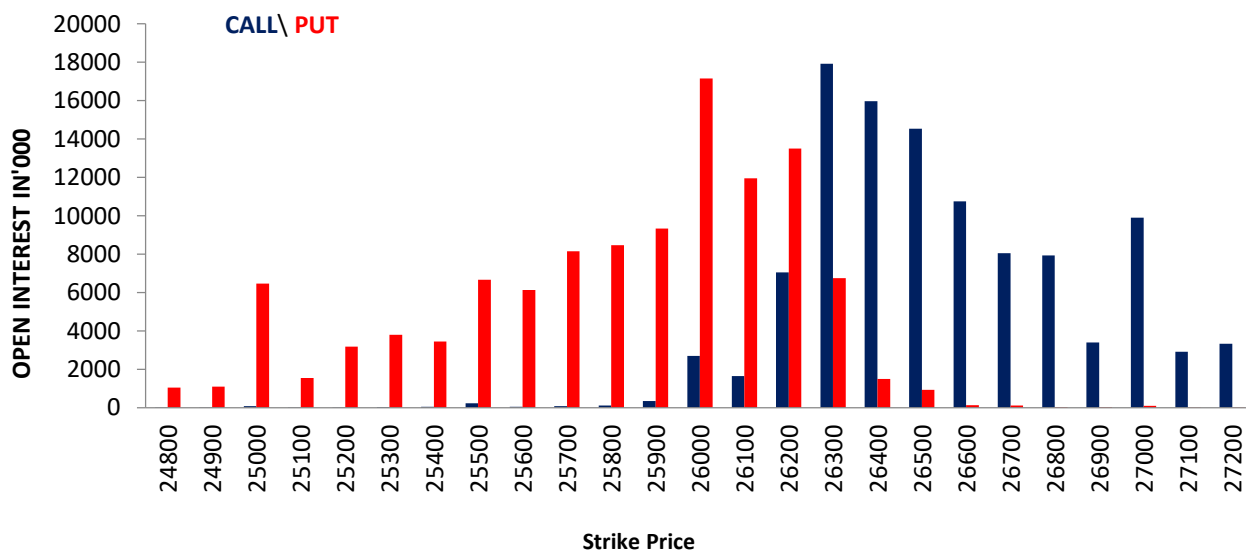
| Nifty Options Highest OI (Weekly) |                           |              |                           |
|-----------------------------------|---------------------------|--------------|---------------------------|
| CALL                              |                           | PUT          |                           |
| Strike Price                      | Open Interest (Contracts) | Strike Price | Open Interest (Contracts) |
| 26300                             | 275677                    | 26000        | 263991                    |

**FII Activity on 05 Jan 2026**

|                        | BUY             |                | SELL            |                | NET          | OPEN INTEREST  |               |
|------------------------|-----------------|----------------|-----------------|----------------|--------------|----------------|---------------|
|                        | Contracts       | Value (Rs Cr)  | Contracts       | Value (Rs Cr)  | (Rs Cr)      | Contracts      | Value (Rs Cr) |
| <b>Index Futures</b>   | <b>17982</b>    | <b>3142</b>    | <b>15759</b>    | <b>2741</b>    | <b>401</b>   | <b>166245</b>  | <b>28580</b>  |
| <b>Nifty Futures</b>   | 11251           | 1932           | 10554           | 1810           | <b>121</b>   | 130568         | 22359         |
| <b>Bank Nifty Fut.</b> | 6167            | 1115           | 4291            | 776            | <b>339</b>   | 17580          | 3174          |
| <b>Index Options</b>   | <b>11318708</b> | <b>1937938</b> | <b>11334116</b> | <b>1939797</b> | <b>-1858</b> | <b>2286908</b> | <b>391811</b> |
| <b>Nifty Options</b>   | 11119556        | 1902184        | 11136369        | 1904307        | <b>-2123</b> | 2062173        | 351862        |
| <b>Bank Nifty Opt.</b> | 156079          | 28485          | 155528          | 28358          | <b>127</b>   | 182096         | 32801         |
| <b>Stock Futures</b>   | <b>302154</b>   | <b>21356</b>   | <b>348853</b>   | <b>23924</b>   | <b>-2568</b> | <b>6020992</b> | <b>415719</b> |
| <b>Stock Options</b>   | <b>411006</b>   | <b>29283</b>   | <b>415695</b>   | <b>29470</b>   | <b>-188</b>  | <b>356371</b>  | <b>24681</b>  |

**FII's Open Interest (Contracts)**

| Date                   | Index Futures | Nifty Futures | Bank Nifty Futures | Index Options  | Nifty Options | Bank Nifty Options | Stock Futures  | Stock Options |
|------------------------|---------------|---------------|--------------------|----------------|---------------|--------------------|----------------|---------------|
| 05-Jan-26              | <b>166245</b> | 130568        | 17580              | <b>2286908</b> | 2062173       | 182096             | <b>6020992</b> | <b>356371</b> |
| 02-Jan-26              | <b>168772</b> | 135375        | 15524              | <b>2017579</b> | 1820953       | 155143             | <b>6003553</b> | <b>299988</b> |
| <b>NET (CONTRACTS)</b> | <b>-2527</b>  | <b>-4807</b>  | <b>2056</b>        | <b>269329</b>  | <b>241220</b> | <b>26953</b>       | <b>17439</b>   | <b>56383</b>  |

**Nifty Weekly (06 – Jan) Option Open Interest Distribution**




| Top Gainers OI Wise |               |           |
|---------------------|---------------|-----------|
| Company             | Future OI (%) | Price (%) |
| PREMIERENE          | 160.36        | -6.87     |
| WAAREEENER          | 91.56         | -5.30     |
| SWIGGY              | 18.46         | -2.27     |
| KFINTECH            | 17.98         | 0.74      |
| 360ONE              | 13.67         | -0.09     |

| Top Losers OI Wise |               |           |
|--------------------|---------------|-----------|
| Company            | Future OI (%) | Price (%) |
| UNIONBANK          | -8.62         | 3.61      |
| COALINDIA          | -5.22         | -0.11     |
| SHREECEM           | -4.92         | 2.22      |
| BDL                | -4.77         | 3.13      |
| KEI                | -4.07         | -0.02     |

| Top Gainers Price Wise |               |           |
|------------------------|---------------|-----------|
| Company                | Future OI (%) | Price (%) |
| PGEL                   | 11.35         | 4.63      |
| UNIONBANK              | -8.62         | 3.61      |
| AMBER                  | -1.12         | 3.54      |
| VOLTAS                 | 1.54          | 3.26      |
| SOLARINDS              | -1.86         | 3.20      |

| Top Losers Price Wise |               |           |
|-----------------------|---------------|-----------|
| Company               | Future OI (%) | Price (%) |
| PREMIERENE            | 160.36        | -6.87     |
| WAAREEENER            | 91.56         | -5.30     |
| CUMMINSIND            | 2.36          | -3.84     |
| IDEA                  | -0.24         | -2.97     |
| IRCTC                 | 10.62         | -2.78     |

| Long Buildup |               |           |
|--------------|---------------|-----------|
| Company      | Future OI (%) | Price (%) |
| KFINTECH     | 17.98         | 0.74      |
| SAMMAANCAP   | 12.39         | 1.94      |
| PGEL         | 11.35         | 4.63      |
| DELHIVERY    | 10.31         | 1.84      |
| BAJAJHLDNG   | 10.09         | 0.81      |

| Short Buildup |               |           |
|---------------|---------------|-----------|
| Company       | Future OI (%) | Price (%) |
| PREMIERENE    | 160.36        | -6.87     |
| SWIGGY        | 18.46         | -2.27     |
| 360ONE        | 13.67         | -0.09     |
| IRCTC         | 10.62         | -2.78     |
| LTIM          | 8.85          | -0.13     |

| Long Unwinding |               |           |
|----------------|---------------|-----------|
| Company        | Future OI (%) | Price (%) |
| COALINDIA      | -5.22         | -0.11     |
| KEI            | -4.07         | -0.02     |
| PERSISTENT     | -3.32         | -1.36     |
| DALBHARAT      | -2.74         | -0.61     |
| GLENMARK       | -2.24         | -1.23     |

| Short Covering |               |           |
|----------------|---------------|-----------|
| Company        | Future OI (%) | Price (%) |
| UNIONBANK      | -8.62         | 3.61      |
| SHREECEM       | -4.92         | 2.22      |
| BDL            | -4.77         | 3.13      |
| IIFL           | -3.52         | 0.63      |
| LODHA          | -3.50         | 3.16      |

### Securities In Ban For Trade – 06.01.2026

| No. | Company Name |
|-----|--------------|
| 1.  | SAIL         |
| 2.  | SAMMAANCAP   |

## Economic Calendar

| Tuesday                           | Wednesday  | Thursday   | Friday  | Monday     |
|-----------------------------------|--|--|---|------------|
| 06 Jan                            | 07 Jan   | 08 Jan   | 09 Jan  | 12 Jan     |
| India, EU, UK, US:<br>Service PMI | Japan: Service PMI<br>UK: Construction<br>PMI<br>CU: CPO<br>India: GDP<br>US: MBA<br>Mortgage, AD<br>Employment Chg.,<br>ISM Service,<br>Factory & Durable<br>Goods Orders | EU: PPI,<br>Unemployment<br>Rate<br>US: Challenger Job<br>Cuts, Initial &<br>Continuing Claims,<br>Trade Balance,<br>Whole Sale<br>Inventories | China: PPI, CPI<br>EU: Retail Sales<br>US: Chg. In NFP,<br>Unemployment<br>Rate, Housing<br>Starts, Building<br>Permits, Uni. Of<br>Mich. Sentiment | India: CPI |

## Open Derivatives Trading Calls

| NO | RECO DT   | RECO | COMPANY NAME        | BUY RANGE     | CMP       | SL    | TARGET | UPSIDE % | VALID TILL |
|----|-----------|------|---------------------|---------------|-----------|-------|--------|----------|------------|
| 1  | 5-JAN-26  | SELL | BANK NIFTY JAN FUT  | 60098-60300   | 60,157.00 | 60400 | 59600  | 0.9      | 8-JAN-26   |
| 2  | 17-DEC-25 | SELL | ICICI BANK FEB FUT  | 1366.2-1385   | 1,383.80  | 1400  | 1265   | 8.6      | 24-FEB-26  |
| 3  | 24-DEC-25 | BUY  | PERONET JAN FUT     | 285.55-277.45 | 289.20    | 275   | 310    | 7.2      | 7-JAN-26   |
| 4  | 2-JAN-26  | BUY  | JIO FINANCE JAN FUT | 300-302.55    | 301.30    | 297   | 318    | 5.5      | 16-JAN-26  |
| 5  | 5-JAN-26  | BUY  | TATA ELXSI JAN FUT  | 5393-5293     | 5,379.00  | 5210  | 5750   | 6.9      | 19-JAN-26  |

## Open Short-Term MTF Calls

| NO. | RECO DT.  | RECO | COMPANY NAME   | BUY RANGE    | CMP    | Lower Band | SL   | TARGET | UPSIDE % | VALID TILL |
|-----|-----------|------|----------------|--------------|--------|------------|------|--------|----------|------------|
| 1   | 11-DEC-25 | BUY  | ABB            | 5234-5250    | 5168.5 | 5125       | 5050 | 5500   | 6.4      | 12-JAN-26  |
| 2   | 15-DEC-25 | BUY  | PNC INFRA      | 255.70-257   | 252.85 | 247        | 243  | 272    | 7.6      | 12-JAN-26  |
| 3   | 31-DEC-25 | BUY  | GE SHIPPING    | 1127-1122    | 1125.9 | 1090       | 1070 | 1195   | 6.1      | 14-JAN-26  |
| 4   | 31-DEC-25 | BUY  | SUNFLAG IRON   | 271-274      | 268.4  | 260        | 255  | 292    | 8.8      | 14-JAN-26  |
| 5   | 31-DEC-25 | BUY  | SANGAM INDIA   | 500-496      | 482.05 | 481        | 472  | 530    | 9.9      | 14-JAN-26  |
| 6   | 31-DEC-25 | BUY  | KEI INDUSTRIES | 4459.10-4485 | 4528.9 | 4394       | 4339 | 4660   | 2.9      | 21-JAN-26  |
| 7   | 1-JAN-26  | BUY  | ADANI ENERGY   | 1051-1057    | 1044.9 | 1031       | 1014 | 1095   | 4.8      | 22-JAN-26  |
| 8   | 2-JAN-26  | BUY  | GABRIEL        | 1038.90-1050 | 1058.6 | 1013       | 991  | 1105   | 4.4      | 16-JAN-26  |
| 9   | 2-JAN-26  | BUY  | GMDC           | 615-623      | 609.3  | 615.75     | 584  | 660    | 8.3      | 16-JAN-26  |

## Open Positional MTF Calls

| NO. | RECO DT.  | RECO | COMPANY NAME       | BUY RANGE    | CMP     | SL     | TARGET 1 | TARGET 2 | UPSIDE % | VALID TILL |
|-----|-----------|------|--------------------|--------------|---------|--------|----------|----------|----------|------------|
| 1   | 15-DEC-25 | BUY  | IDFC FIRST BANK    | 83.50-83.09  | 84.93   | 78.5   | 88.5     | 95       | 12       | 29-JAN-26  |
| 2   | 19-DEC-25 | BUY  | BOROSIL RENEWABLES | 532-528      | 540.15  | 495.0  | 570.0    | 610      | 13       | 17-FEB-26  |
| 3   | 19-DEC-25 | BUY  | BHARAT FORGE       | 1427-1435    | 1482.3  | 1350.0 | 1515.0   | 1550     | 5        | 2-FEB-26   |
| 4   | 20-DEC-25 | BUY  | TEGA INDUSTRIES    | 1956-1990    | 1906.4  | 1810.0 | 2115.0   | 2190     | 15       | 18-FEB-26  |
| 5   | 22-DEC-25 | BUY  | UNIPARTS INDIA     | 497-493.35   | 497.1   | 465.0  | 533.0    | 565      | 14       | 20-FEB-26  |
| 6   | 22-DEC-25 | BUY  | GLENMARK           | 2040-2060    | 2039.2  | 1895.0 | 2210.0   | 2265     | 11       | 5-FEB-26   |
| 7   | 24-DEC-25 | BUY  | KFINTECH           | 1118-1112.60 | 1090    | 1058.0 | 1180.0   | 1240     | 14       | 7-FEB-26   |
| 8   | 26-DEC-25 | BUY  | IRCTC              | 702-710      | 675.55  | 660.0  | 760.0    | 780      | 15       | 9-FEB-26   |
| 9   | 31-DEC-25 | BUY  | SBIN               | 980-990      | 1005.55 | 925.0  | 1042.0   | 1080     | 7        | 14-FEB-26  |
| 10  | 1-JAN-26  | BUY  | SAIL               | 148-150      | 150.85  | 134.0  | 163.5    | 170      | 13       | 15-FEB-26  |
| 11  | 2-JAN-26  | BUY  | OBERIO REALITY     | 1719.90-1740 | 1740    | 1610.0 | 1860.0   | 1910     | 10       | 16-FEB-26  |
| 12  | 2-JAN-26  | BUY  | COAL INDIA         | 408-406      | 427.45  | 379.0  | 440.0    | 465      | 9        | 16-FEB-26  |
| 13  | 2-JAN-26  | BUY  | MINDA CORP         | 600-605      | 603.05  | 560.0  | 649.0    | 699      | 16       | 3-MAR-26   |

= 1st Target Achieved

**NSE 200 SUPPORT & RESISTANCE**

| SYMBOL     | CLOSE   | PIVOT   | SUPT 2  | SUPT 1  | RESI 1  | RESI 2  | 52 W H  | 52 W L  | 30 D % CHG |
|------------|---------|---------|---------|---------|---------|---------|---------|---------|------------|
| 360ONE     | 1199.0  | 1203.9  | 1174.6  | 1186.8  | 1216.1  | 1233.2  | 1318.0  | 790.5   | 4.56       |
| ABB        | 5168.5  | 5183.0  | 5064.5  | 5116.5  | 5235.0  | 5301.5  | 6827.0  | 4684.5  | -0.10      |
| ABCAPITAL  | 363.3   | 363.3   | 356.8   | 360.1   | 366.5   | 369.7   | 369.0   | 149.0   | 1.27       |
| ACC        | 1771.6  | 1766.9  | 1738.2  | 1754.9  | 1783.6  | 1795.6  | 2119.9  | 1715.0  | -1.48      |
| ADANIENSOL | 1044.9  | 1047.5  | 1029.8  | 1037.4  | 1055.1  | 1065.2  | 1067.7  | 639.5   | 6.75       |
| ADANIENT   | 2279.5  | 2285.9  | 2256.3  | 2267.9  | 2297.5  | 2315.5  | 2616.5  | 1967.5  | 0.62       |
| ADANIGREEN | 1030.5  | 1034.3  | 1017.3  | 1023.9  | 1040.9  | 1051.3  | 1177.6  | 758.0   | 1.26       |
| ADANIPORTS | 1493.0  | 1489.6  | 1471.9  | 1482.5  | 1500.2  | 1507.3  | 1549.0  | 1010.8  | -1.09      |
| ADANIPOWER | 146.2   | 146.4   | 142.4   | 144.3   | 148.2   | 150.3   | 182.7   | 89.0    | 1.68       |
| ALKEM      | 5552.5  | 5566.8  | 5481.8  | 5517.2  | 5602.2  | 5651.8  | 5868.0  | 4491.7  | -2.17      |
| AMBUJACEM  | 571.3   | 570.5   | 564.4   | 567.8   | 573.9   | 576.5   | 625.0   | 455.0   | 7.02       |
| APLAPOLLO  | 1966.2  | 1946.9  | 1881.9  | 1924.0  | 1989.0  | 2011.9  | 1993.7  | 1272.7  | 11.02      |
| APOLLOHOSP | 7083.0  | 7093.7  | 7022.7  | 7052.8  | 7123.8  | 7164.7  | 8099.5  | 6001.0  | -1.48      |
| ASHOKLEY   | 187.8   | 188.5   | 182.8   | 185.3   | 191.0   | 194.3   | 191.8   | 95.9    | 16.72      |
| ASIANPAINT | 2815.6  | 2804.2  | 2745.2  | 2780.4  | 2839.4  | 2863.2  | 2985.7  | 2124.8  | -5.15      |
| ASTRAL     | 1492.8  | 1481.3  | 1430.1  | 1461.5  | 1512.7  | 1532.5  | 1628.0  | 1232.3  | 2.28       |
| ATGL       | 577.1   | 580.1   | 568.3   | 572.7   | 584.5   | 592.0   | 798.0   | 532.6   | -2.71      |
| AUBANK     | 1015.0  | 1015.6  | 993.9   | 1004.4  | 1026.1  | 1037.3  | 1026.8  | 478.4   | 5.65       |
| AUROPHARMA | 1207.4  | 1209.5  | 1186.5  | 1196.9  | 1219.9  | 1232.5  | 1328.0  | 1010.0  | -0.84      |
| AXISBANK   | 1285.8  | 1281.8  | 1262.1  | 1274.0  | 1293.7  | 1301.5  | 1304.0  | 933.5   | 0.26       |
| BAJAJ-AUTO | 9497.5  | 9548.8  | 9329.8  | 9413.7  | 9632.7  | 9767.8  | 9684.0  | 7089.4  | 4.27       |
| BAJAJFINSV | 2039.2  | 2038.4  | 2022.5  | 2030.8  | 2046.7  | 2054.3  | 2195.0  | 1617.0  | -2.73      |
| BAJAJHFL   | 97.5    | 97.4    | 95.9    | 96.7    | 98.2    | 98.9    | 137.0   | 92.1    | 1.99       |
| BAJAJHLDNG | 11272.0 | 11254.7 | 10962.7 | 11117.3 | 11409.3 | 11546.7 | 14763.0 | 10245.1 | 0.81       |
| BAJFINANCE | 978.8   | 984.3   | 960.2   | 969.5   | 993.6   | 1008.5  | 1102.5  | 710.5   | -6.61      |
| BANKBARODA | 306.9   | 307.8   | 300.6   | 303.7   | 310.9   | 314.9   | 311.8   | 190.7   | 4.87       |
| BANKINDIA  | 149.9   | 150.1   | 145.7   | 147.8   | 152.1   | 154.4   | 152.3   | 90.1    | 4.74       |
| BDL        | 1541.8  | 1529.6  | 1470.6  | 1506.2  | 1565.2  | 1588.6  | 2096.6  | 907.0   | 1.94       |
| BEL        | 413.8   | 411.7   | 395.9   | 404.9   | 420.7   | 427.5   | 436.0   | 240.3   | 1.70       |
| BHARATFORG | 1482.3  | 1480.7  | 1452.6  | 1467.5  | 1495.6  | 1508.8  | 1494.0  | 919.1   | 5.43       |
| BHARTIARTL | 2105.0  | 2104.5  | 2088.9  | 2097.0  | 2112.6  | 2120.1  | 2174.5  | 1559.5  | -0.18      |
| BHARTIHEXA | 1807.7  | 1808.2  | 1761.2  | 1784.5  | 1831.5  | 1855.2  | 2052.9  | 1234.0  | 2.79       |
| BHEL       | 300.1   | 299.8   | 292.4   | 296.2   | 303.6   | 307.2   | 303.4   | 176.0   | 8.03       |
| BIOCON     | 391.4   | 392.9   | 382.4   | 386.9   | 397.4   | 403.4   | 425.0   | 291.0   | -0.33      |
| BLUESTARCO | 1848.9  | 1831.5  | 1723.2  | 1786.0  | 1894.3  | 1939.8  | 2417.0  | 1521.0  | 6.60       |
| BOSCHLTD   | 39170.0 | 39160.0 | 38370.0 | 38770.0 | 39560.0 | 39950.0 | 41945.0 | 25921.6 | 6.09       |
| BPCL       | 377.9   | 379.3   | 368.2   | 373.1   | 384.1   | 390.3   | 388.2   | 234.0   | 4.88       |
| BRITANNIA  | 6026.5  | 6016.3  | 5854.8  | 5940.7  | 6102.2  | 6177.8  | 6336.0  | 4506.0  | 1.10       |
| BSE        | 2673.9  | 2663.6  | 2575.8  | 2624.9  | 2712.7  | 2751.4  | 3030.0  | 1227.3  | -5.04      |
| CANBK      | 154.2   | 155.1   | 151.0   | 152.6   | 156.7   | 159.2   | 158.0   | 78.6    | 3.76       |
| CGPOWER    | 645.3   | 646.0   | 632.2   | 638.7   | 652.5   | 659.8   | 797.6   | 517.7   | -2.43      |
| CHOLAFIN   | 1772.4  | 1772.9  | 1749.3  | 1760.9  | 1784.5  | 1796.5  | 1789.1  | 1169.8  | 2.43       |
| CIPLA      | 1519.8  | 1517.3  | 1499.5  | 1509.7  | 1527.5  | 1535.1  | 1673.0  | 1335.0  | -0.07      |
| COALINDIA  | 427.5   | 429.2   | 416.0   | 421.7   | 434.9   | 442.4   | 436.7   | 349.3   | 12.50      |
| COCHINSHIP | 1630.0  | 1639.2  | 1593.7  | 1611.9  | 1657.4  | 1684.7  | 2545.0  | 1180.2  | -0.85      |
| COFORGE    | 1642.0  | 1644.4  | 1613.3  | 1627.6  | 1658.7  | 1675.5  | 1994.0  | 1194.0  | -16.98     |
| COLPAL     | 2091.3  | 2095.0  | 2072.2  | 2081.8  | 2104.6  | 2117.8  | 2975.0  | 2051.0  | -3.38      |
| CONCOR     | 528.4   | 528.5   | 517.5   | 522.9   | 533.9   | 539.4   | 652.0   | 481.0   | 3.39       |
| COROMANDEL | 2299.2  | 2282.0  | 2219.3  | 2259.3  | 2322.0  | 2344.7  | 2718.9  | 1596.0  | -0.05      |
| CUMMINSIND | 4309.8  | 4370.6  | 4141.0  | 4225.4  | 4455.0  | 4600.2  | 4615.0  | 2580.0  | -3.56      |

**NSE 200 SUPPORT & RESISTANCE**

| SYMBOL     | CLOSE   | PIVOT   | SUPT 2  | SUPT 1  | RESI 1  | RESI 2  | 52 W H  | 52 W L  | 30 D %<br>CHG |
|------------|---------|---------|---------|---------|---------|---------|---------|---------|---------------|
| DABUR      | 521.2   | 525.0   | 510.9   | 516.1   | 530.2   | 539.1   | 577.0   | 433.3   | 2.18          |
| DIVISLAB   | 6363.5  | 6385.2  | 6283.2  | 6323.3  | 6425.3  | 6487.2  | 7071.5  | 4955.0  | -1.70         |
| DIXON      | 12051.0 | 12107.7 | 11819.7 | 11935.3 | 12223.3 | 12395.7 | 18700.0 | 11646.0 | -12.35        |
| DLF        | 711.4   | 707.2   | 689.9   | 700.6   | 718.0   | 724.6   | 886.8   | 601.2   | -1.17         |
| DMART      | 3646.3  | 3666.9  | 3583.1  | 3614.7  | 3698.5  | 3750.7  | 4949.5  | 3340.0  | -7.74         |
| DRREDDY    | 1250.0  | 1252.4  | 1235.1  | 1242.6  | 1259.9  | 1269.7  | 1405.9  | 1020.0  | -1.98         |
| EICHERMOT  | 7482.5  | 7441.7  | 7255.2  | 7368.8  | 7555.3  | 7628.2  | 7514.5  | 4646.0  | 3.81          |
| ENRIN      | 2564.5  | 2565.7  | 2524.4  | 2544.4  | 2585.7  | 2607.0  | 3625.0  | 2508.8  | -17.23        |
| ETERNAL    | 281.8   | 281.8   | 277.4   | 279.6   | 284.0   | 286.2   | 368.5   | 194.8   | -3.63         |
| EXIDEIND   | 367.3   | 369.5   | 359.2   | 363.2   | 373.5   | 379.8   | 431.0   | 328.0   | -3.38         |
| FEDERALBNK | 263.8   | 264.1   | 258.3   | 261.0   | 266.8   | 269.8   | 271.1   | 172.7   | 1.76          |
| FORTIS     | 915.5   | 913.2   | 897.3   | 906.4   | 922.3   | 929.1   | 1104.3  | 577.0   | 3.03          |
| GAIL       | 173.1   | 173.8   | 170.2   | 171.6   | 175.2   | 177.3   | 202.8   | 150.5   | 1.81          |
| GLENMARK   | 2039.2  | 2054.2  | 1993.9  | 2016.5  | 2076.8  | 2114.5  | 2284.8  | 1275.5  | 3.61          |
| GMRAIRPORT | 105.7   | 106.2   | 102.8   | 104.3   | 107.6   | 109.5   | 110.4   | 67.8    | 2.15          |
| GODFRYPHLP | 2263.3  | 2269.4  | 2234.4  | 2248.9  | 2283.9  | 2304.4  | 3947.0  | 1370.8  | -17.17        |
| GODREJCP   | 1244.3  | 1239.0  | 1217.5  | 1230.9  | 1252.4  | 1260.5  | 1309.0  | 979.5   | 9.53          |
| GODREJPROP | 2124.2  | 2103.5  | 2032.7  | 2078.4  | 2149.2  | 2174.3  | 2764.7  | 1900.0  | 2.01          |
| GRASIM     | 2848.9  | 2861.5  | 2811.0  | 2829.9  | 2880.4  | 2912.0  | 2977.8  | 2277.0  | 3.71          |
| HAL        | 4526.1  | 4496.3  | 4369.2  | 4447.6  | 4574.7  | 4623.4  | 5165.0  | 3046.1  | 1.87          |
| HAVELLS    | 1451.4  | 1448.2  | 1417.1  | 1434.3  | 1465.4  | 1479.3  | 1712.9  | 1380.0  | 1.04          |
| HCLTECH    | 1607.6  | 1607.1  | 1553.7  | 1580.6  | 1634.0  | 1660.5  | 2012.2  | 1302.8  | -4.48         |
| HDFCAMC    | 2660.7  | 2661.4  | 2611.6  | 2636.1  | 2685.9  | 2711.2  | 2967.3  | 1781.5  | 3.23          |
| HDFCBANK   | 977.5   | 986.7   | 956.6   | 967.1   | 997.2   | 1016.8  | 1020.5  | 812.2   | -2.57         |
| HDFCLIFE   | 759.3   | 758.7   | 744.8   | 752.1   | 766.0   | 772.6   | 820.8   | 584.3   | -1.17         |
| HEROMOTOCO | 5985.5  | 5985.2  | 5865.2  | 5925.3  | 6045.3  | 6105.2  | 6388.5  | 3344.0  | -5.75         |
| HINDALCO   | 931.7   | 931.8   | 919.8   | 925.7   | 937.8   | 943.9   | 937.9   | 546.5   | 13.17         |
| HINDPETRO  | 492.4   | 496.3   | 476.0   | 484.2   | 504.5   | 516.7   | 508.5   | 287.6   | 9.34          |
| HINDUNILVR | 2384.1  | 2371.5  | 2313.9  | 2349.0  | 2406.6  | 2429.1  | 2750.0  | 2136.0  | 1.95          |
| HINDZINC   | 628.6   | 629.6   | 612.1   | 620.4   | 637.8   | 647.0   | 656.4   | 378.2   | 26.20         |
| HUDCO      | 226.3   | 227.7   | 219.9   | 223.1   | 230.9   | 235.6   | 253.7   | 158.9   | 0.49          |
| HYUNDAI    | 2281.6  | 2272.3  | 2239.0  | 2260.3  | 2293.6  | 2305.6  | 2890.0  | 1541.7  | -1.21         |
| ICICIBANK  | 1371.5  | 1366.5  | 1343.6  | 1357.6  | 1380.5  | 1389.4  | 1500.0  | 1186.0  | -1.51         |
| ICICIGI    | 1979.9  | 1976.2  | 1954.6  | 1967.2  | 1988.8  | 1997.8  | 2068.7  | 1613.7  | 0.28          |
| IDEA       | 11.4    | 11.6    | 10.9    | 11.2    | 11.8    | 12.3    | 12.8    | 6.1     | 5.83          |
| IDFCFIRSTB | 84.9    | 85.2    | 83.4    | 84.2    | 86.0    | 87.0    | 87.0    | 52.5    | 5.02          |
| IGL        | 190.6   | 191.9   | 187.4   | 189.0   | 193.5   | 196.4   | 229.0   | 172.0   | -0.62         |
| INDHOTEL   | 744.2   | 742.6   | 730.1   | 737.1   | 749.6   | 755.1   | 876.5   | 672.6   | 1.82          |
| INDIANB    | 858.2   | 858.6   | 840.0   | 849.1   | 867.7   | 877.2   | 894.9   | 473.9   | 6.09          |
| INDIGO     | 5102.5  | 5105.8  | 5040.8  | 5071.7  | 5136.7  | 5170.8  | 6232.5  | 3945.0  | -4.99         |
| INDUSINDBK | 900.0   | 900.8   | 883.3   | 891.6   | 909.1   | 918.3   | 1086.6  | 606.0   | 3.43          |
| INDUSTOWER | 434.2   | 436.3   | 425.6   | 429.9   | 440.6   | 446.9   | 446.0   | 312.6   | 4.45          |
| INFY       | 1606.4  | 1608.8  | 1554.9  | 1580.7  | 1634.6  | 1662.7  | 1982.8  | 1307.0  | -0.61         |
| IOC        | 165.0   | 165.8   | 160.6   | 162.8   | 168.0   | 171.0   | 174.5   | 110.7   | 0.82          |
| IRB        | 42.2    | 42.5    | 41.6    | 41.9    | 42.8    | 43.3    | 60.9    | 40.5    | -1.31         |
| IRCTC      | 675.6   | 683.7   | 655.8   | 665.7   | 693.6   | 711.6   | 831.8   | 656.0   | 0.05          |
| IREDA      | 144.6   | 145.9   | 140.1   | 142.3   | 148.2   | 151.7   | 231.8   | 129.1   | 8.37          |
| IRFC       | 127.6   | 127.8   | 125.1   | 126.3   | 129.1   | 130.6   | 155.5   | 108.0   | 11.34         |
| ITC        | 349.7   | 349.9   | 342.0   | 345.9   | 353.8   | 357.8   | 471.5   | 345.3   | -13.64        |
| ITCHOTELS  | 198.3   | 198.7   | 194.4   | 196.3   | 200.6   | 202.9   | 261.6   | 155.1   | -3.72         |

**NSE 200 SUPPORT & RESISTANCE**

| SYMBOL     | CLOSE   | PIVOT   | SUPT 2  | SUPT 1  | RESI 1  | RESI 2  | 52 W H  | 52 W L  | 30 D %<br>CHG |
|------------|---------|---------|---------|---------|---------|---------|---------|---------|---------------|
| JINDALSTEL | 1081.6  | 1081.2  | 1068.1  | 1074.8  | 1087.9  | 1094.3  | 1098.0  | 723.4   | 7.43          |
| JIOFIN     | 300.4   | 300.6   | 297.0   | 298.7   | 302.3   | 304.2   | 338.6   | 198.7   | -1.10         |
| JSWENERGY  | 516.9   | 517.0   | 502.7   | 509.8   | 524.1   | 531.2   | 624.4   | 418.8   | 11.90         |
| JSWSTEEL   | 1185.9  | 1185.9  | 1172.0  | 1179.0  | 1192.9  | 1199.8  | 1223.9  | 880.0   | 2.04          |
| JUBLFOOD   | 539.1   | 542.0   | 520.5   | 529.8   | 551.3   | 563.6   | 796.8   | 532.8   | -9.13         |
| KALYANKJIL | 504.2   | 499.6   | 482.3   | 493.3   | 510.5   | 516.8   | 793.5   | 399.4   | 2.38          |
| KEI        | 4528.9  | 4525.1  | 4450.6  | 4489.8  | 4564.3  | 4599.6  | 4582.6  | 2424.0  | 8.78          |
| KOTAKBANK  | 2190.9  | 2193.2  | 2168.5  | 2179.7  | 2204.4  | 2217.9  | 2301.9  | 1723.8  | 1.67          |
| KPITTECH   | 1151.0  | 1157.5  | 1130.5  | 1140.7  | 1167.7  | 1184.5  | 1483.9  | 1020.6  | -9.16         |
| LICHSGFIN  | 539.9   | 542.3   | 532.3   | 536.1   | 546.1   | 552.2   | 646.5   | 483.7   | -0.35         |
| LICI       | 846.2   | 851.2   | 831.3   | 838.7   | 858.6   | 871.1   | 980.0   | 715.3   | -2.72         |
| LODHA      | 1120.0  | 1112.1  | 1068.3  | 1094.1  | 1137.9  | 1155.9  | 1531.0  | 1035.2  | 0.76          |
| LT         | 4150.4  | 4159.4  | 4097.2  | 4123.8  | 4186.0  | 4221.6  | 4195.0  | 2965.3  | 2.78          |
| LTF        | 320.3   | 319.4   | 314.1   | 317.2   | 322.5   | 324.7   | 321.9   | 129.2   | 3.46          |
| LTIM       | 6059.0  | 6074.0  | 5936.0  | 5997.5  | 6135.5  | 6212.0  | 6380.0  | 3802.0  | -3.70         |
| LUPIN      | 2083.7  | 2089.8  | 2051.2  | 2067.5  | 2106.1  | 2128.4  | 2392.3  | 1795.2  | -0.72         |
| M&M        | 3790.3  | 3805.1  | 3750.2  | 3770.2  | 3825.1  | 3860.0  | 3839.9  | 2425.0  | 1.97          |
| M&MFIN     | 384.2   | 390.2   | 367.9   | 376.1   | 398.4   | 412.5   | 412.2   | 231.0   | 521.68        |
| MANKIND    | 2195.0  | 2200.6  | 2163.3  | 2179.1  | 2216.4  | 2237.9  | 2998.4  | 2090.0  | -0.48         |
| MARICO     | 773.1   | 766.9   | 744.2   | 758.6   | 781.3   | 789.6   | 775.2   | 577.9   | 4.94          |
| MARUTI     | 17155.0 | 17168.3 | 16778.3 | 16966.7 | 17356.7 | 17558.3 | 17370.0 | 11059.5 | 5.36          |
| MAXHEALTH  | 1050.5  | 1053.9  | 1039.8  | 1045.1  | 1059.2  | 1068.0  | 1314.3  | 940.1   | -4.27         |
| MAZDOCK    | 2514.7  | 2517.6  | 2467.6  | 2491.1  | 2541.1  | 2567.6  | 3775.0  | 1918.1  | -3.88         |
| MFSL       | 1703.7  | 1700.7  | 1644.4  | 1674.0  | 1730.3  | 1757.0  | 1751.4  | 950.0   | 0.80          |
| MOTHERSON  | 121.8   | 121.6   | 119.2   | 120.5   | 122.9   | 124.1   | 124.7   | 71.5    | 4.07          |
| MOTILALOFS | 855.9   | 860.0   | 842.0   | 848.9   | 866.9   | 878.0   | 1097.1  | 513.0   | -3.30         |
| MPHASIS    | 2801.9  | 2793.6  | 2737.9  | 2769.9  | 2825.6  | 2849.3  | 3078.4  | 2044.6  | -5.14         |
| MRF        | 150405  | 150623  | 148558  | 149482  | 151547  | 152688  | 163600  | 102124  | -1.83         |
| MUTHOOTFIN | 3921.0  | 3897.0  | 3806.9  | 3863.9  | 3954.0  | 3987.1  | 3930.0  | 1965.0  | 3.18          |
| NATIONALUM | 330.8   | 331.1   | 324.1   | 327.4   | 334.5   | 338.2   | 334.8   | 137.8   | 21.11         |
| NAUKRI     | 1343.2  | 1349.3  | 1312.1  | 1327.6  | 1364.8  | 1386.5  | 1825.8  | 1157.0  | -3.28         |
| NESTLEIND  | 1314.6  | 1304.4  | 1262.9  | 1288.7  | 1330.2  | 1345.9  | 1320.0  | 1055.0  | 5.43          |
| NHPC       | 83.7    | 83.8    | 82.0    | 82.8    | 84.6    | 85.5    | 92.3    | 71.0    | 8.55          |
| NMDC       | 83.9    | 84.1    | 82.1    | 83.0    | 85.0    | 86.2    | 85.3    | 59.5    | 9.74          |
| NTPC       | 350.6   | 351.3   | 344.9   | 347.7   | 354.1   | 357.7   | 371.5   | 292.8   | 8.44          |
| NTPCGREEN  | 96.0    | 96.3    | 94.4    | 95.2    | 97.1    | 98.2    | 133.0   | 84.6    | 5.26          |
| NYKAA      | 269.6   | 269.8   | 263.8   | 266.7   | 272.7   | 275.9   | 273.2   | 154.9   | 5.79          |
| OBEROIRLTY | 1740.0  | 1741.1  | 1710.3  | 1725.2  | 1756.0  | 1771.9  | 2297.8  | 1452.0  | 4.96          |
| OFSS       | 7677.0  | 7683.5  | 7570.0  | 7623.5  | 7737.0  | 7797.0  | 12560.0 | 7038.0  | -6.59         |
| OIL        | 419.9   | 422.5   | 405.1   | 412.5   | 429.9   | 439.8   | 494.6   | 325.0   | 1.93          |
| ONGC       | 238.1   | 240.2   | 229.1   | 233.6   | 244.7   | 251.3   | 273.5   | 205.0   | -1.30         |
| PAGEIND    | 35550.0 | 35548.3 | 34833.3 | 35191.7 | 35906.7 | 36263.3 | 50590.0 | 35190.0 | -5.09         |
| PATANJALI  | 573.0   | 568.0   | 549.3   | 561.1   | 579.8   | 586.7   | 670.3   | 521.0   | 4.02          |
| PAYTM      | 1340.1  | 1343.1  | 1317.9  | 1329.0  | 1354.2  | 1368.3  | 1381.8  | 651.5   | -0.33         |
| PERSISTENT | 6204.0  | 6204.8  | 6015.3  | 6109.7  | 6299.2  | 6394.3  | 6599.0  | 4149.0  | -4.85         |
| PFC        | 375.1   | 375.2   | 368.0   | 371.5   | 378.7   | 382.4   | 468.3   | 329.9   | 6.35          |
| PHOENIXLTD | 1924.5  | 1914.8  | 1857.0  | 1890.7  | 1948.5  | 1972.6  | 1938.8  | 1402.5  | 11.56         |
| PIDILITIND | 1505.0  | 1495.5  | 1462.9  | 1483.9  | 1516.5  | 1528.1  | 1575.0  | 1311.1  | 2.03          |
| PIIND      | 3263.6  | 3258.3  | 3220.1  | 3241.8  | 3280.0  | 3296.5  | 4330.0  | 2951.1  | -3.90         |
| PNB        | 125.1   | 125.9   | 122.0   | 123.6   | 127.4   | 129.8   | 128.2   | 85.5    | 2.77          |



**NSE 200 SUPPORT & RESISTANCE**

| SYMBOL     | CLOSE   | PIVOT   | SUPT 2  | SUPT 1  | RESI 1  | RESI 2  | 52 W H  | 52 W L  | 30 D %<br>CHG |
|------------|---------|---------|---------|---------|---------|---------|---------|---------|---------------|
| POLICYBZR  | 1772.0  | 1775.7  | 1734.9  | 1753.5  | 1794.3  | 1816.5  | 2237.0  | 1311.4  | -6.43         |
| POLYCAB    | 7762.0  | 7729.0  | 7473.0  | 7617.5  | 7873.5  | 7985.0  | 7903.0  | 4555.0  | 6.96          |
| POWERGRID  | 271.7   | 271.1   | 267.0   | 269.3   | 273.4   | 275.2   | 322.0   | 247.3   | 0.69          |
| POWERINDIA | 19004.0 | 18879.3 | 18375.3 | 18689.7 | 19193.7 | 19383.3 | 22840.0 | 8801.0  | -1.56         |
| PREMIERENE | 787.8   | 806.7   | 739.2   | 763.5   | 831.0   | 874.2   | 1339.0  | 774.1   | -12.49        |
| PRESTIGE   | 1667.1  | 1650.8  | 1586.0  | 1626.5  | 1691.3  | 1715.6  | 1814.0  | 1048.1  | -1.34         |
| RECLTD     | 381.0   | 381.8   | 372.6   | 376.8   | 386.0   | 390.9   | 541.4   | 331.0   | 7.84          |
| RELIANCE   | 1578.1  | 1588.4  | 1551.9  | 1565.0  | 1601.5  | 1624.9  | 1611.8  | 1114.9  | 2.43          |
| RVNL       | 361.0   | 364.1   | 349.7   | 355.3   | 369.8   | 378.6   | 501.8   | 301.2   | 16.13         |
| SAIL       | 150.9   | 149.5   | 144.6   | 147.7   | 152.6   | 154.4   | 151.3   | 99.2    | 13.81         |
| SBICARD    | 873.5   | 872.2   | 862.6   | 868.1   | 877.7   | 881.8   | 1027.3  | 705.6   | -1.32         |
| SBILIFE    | 2075.6  | 2077.9  | 2046.2  | 2060.9  | 2092.6  | 2109.6  | 2094.9  | 1372.6  | 2.56          |
| SBIN       | 1005.6  | 1007.0  | 991.5   | 998.5   | 1014.0  | 1022.5  | 1015.5  | 680.0   | 3.50          |
| SHREECEM   | 27645.0 | 27468.3 | 26848.3 | 27246.7 | 27866.7 | 28088.3 | 32490.0 | 24817.8 | 6.02          |
| SHRIRAMFIN | 1003.4  | 1004.3  | 984.1   | 993.7   | 1013.9  | 1024.4  | 1025.6  | 493.4   | 17.36         |
| SIEMENS    | 3086.6  | 3094.1  | 3043.7  | 3065.1  | 3115.5  | 3144.5  | 6633.5  | 2450.0  | -7.20         |
| SOLARINDS  | 12731.0 | 12634.0 | 11963.0 | 12347.0 | 13018.0 | 13305.0 | 17820.0 | 8482.5  | -0.69         |
| SONACOMS   | 481.4   | 483.2   | 472.2   | 476.8   | 487.8   | 494.1   | 595.2   | 380.0   | -2.32         |
| SRF        | 3089.3  | 3078.1  | 3033.1  | 3061.2  | 3106.2  | 3123.1  | 3325.0  | 2260.0  | 7.07          |
| SUNPHARMA  | 1728.9  | 1732.8  | 1710.2  | 1719.5  | 1742.1  | 1755.4  | 1865.0  | 1548.0  | -4.23         |
| SUPREMEIND | 3594.4  | 3583.0  | 3487.9  | 3541.2  | 3636.3  | 3678.1  | 4739.0  | 3095.0  | 6.62          |
| SUZLON     | 53.7    | 53.8    | 52.6    | 53.1    | 54.4    | 55.1    | 74.3    | 46.2    | 3.73          |
| SWIGGY     | 377.0   | 377.0   | 377.0   | 377.0   | 377.0   | 377.0   | 546.6   | 297.0   | -4.06         |
| TATACOMM   | 1803.0  | 1802.8  | 1777.7  | 1790.3  | 1815.4  | 1827.9  | 2004.0  | 1291.0  | -1.90         |
| TATACONSUM | 1182.1  | 1179.4  | 1153.4  | 1167.7  | 1193.7  | 1205.4  | 1202.8  | 926.1   | 1.65          |
| TATAELXSI  | 5363.5  | 5351.3  | 5245.8  | 5304.7  | 5410.2  | 5456.8  | 6735.0  | 4700.0  | 2.80          |
| TATAPOWER  | 388.9   | 389.7   | 384.0   | 386.4   | 392.1   | 395.4   | 416.8   | 326.4   | 1.13          |
| TATASTEEL  | 185.7   | 185.2   | 181.1   | 183.4   | 187.5   | 189.2   | 186.9   | 122.6   | 11.14         |
| TATATECH   | 651.1   | 653.2   | 642.6   | 646.8   | 657.4   | 663.8   | 912.0   | 597.0   | -2.31         |
| TCS        | 3216.1  | 3218.0  | 3162.0  | 3189.1  | 3245.1  | 3274.0  | 4323.0  | 2866.6  | -0.68         |
| TECHM      | 1596.9  | 1594.4  | 1560.4  | 1578.6  | 1612.6  | 1628.4  | 1736.4  | 1209.4  | 1.66          |
| TIINDIA    | 2530.0  | 2555.2  | 2461.0  | 2495.5  | 2589.7  | 2649.4  | 3673.7  | 2407.1  | -5.13         |
| TITAN      | 4079.7  | 4073.2  | 4025.2  | 4052.5  | 4100.5  | 4121.2  | 4094.0  | 2925.0  | 6.99          |
| TMPV       | 373.6   | 372.6   | 366.7   | 370.1   | 376.0   | 378.5   | 810.0   | 337.7   | 5.64          |
| TORNTPHARM | 3869.8  | 3875.0  | 3829.9  | 3849.8  | 3894.9  | 3920.1  | 3900.1  | 2886.5  | 2.22          |
| TORNTPOWER | 1403.8  | 1400.3  | 1377.5  | 1390.7  | 1413.5  | 1423.1  | 1640.0  | 1188.0  | 8.83          |
| TRENT      | 4429.8  | 4414.6  | 4314.6  | 4372.2  | 4472.2  | 4514.6  | 7338.6  | 3930.1  | 5.90          |
| TVSMOTOR   | 3864.2  | 3871.9  | 3805.4  | 3834.8  | 3901.3  | 3938.4  | 3909.0  | 2171.4  | 5.42          |
| ULTRACEMCO | 12087.0 | 12020.3 | 11766.3 | 11926.7 | 12180.7 | 12274.3 | 13097.0 | 10047.9 | 4.23          |
| UNIONBANK  | 162.4   | 161.0   | 155.5   | 158.9   | 164.4   | 166.4   | 163.0   | 100.8   | 5.91          |
| UNITDSPR   | 1375.5  | 1378.5  | 1356.1  | 1365.8  | 1388.2  | 1400.9  | 1698.8  | 1271.1  | -5.50         |
| UPL        | 805.1   | 804.9   | 791.5   | 798.3   | 811.7   | 818.2   | 812.2   | 516.1   | 6.06          |
| VBL        | 488.7   | 489.4   | 481.2   | 485.0   | 493.1   | 497.5   | 646.0   | 419.6   | 1.82          |
| VEDL       | 615.7   | 616.6   | 601.8   | 608.7   | 623.5   | 631.4   | 624.5   | 363.0   | 17.38         |
| VMM        | 134.5   | 134.8   | 130.2   | 132.4   | 137.0   | 139.4   | 157.6   | 96.0    | 1.14          |
| VOLTAS     | 1476.8  | 1464.9  | 1393.5  | 1435.1  | 1506.5  | 1536.3  | 1833.1  | 1135.0  | 11.29         |
| WAAREENER  | 2714.3  | 2761.7  | 2602.8  | 2658.6  | 2817.5  | 2920.6  | 3865.0  | 1863.0  | -5.47         |
| WIPRO      | 263.3   | 264.9   | 256.9   | 260.1   | 268.1   | 272.8   | 324.6   | 228.0   | 1.30          |
| YESBANK    | 22.8    | 22.6    | 21.9    | 22.4    | 23.1    | 23.4    | 24.3    | 16.0    | 1.02          |
| ZYDUSLIFE  | 922.0   | 919.4   | 906.0   | 914.0   | 927.4   | 932.8   | 1059.1  | 795.0   | -1.02         |

**Disclosure & Disclaimer :**

HDFC Securities Limited (HSL) is a SEBI Registered Research Analyst having registration no. INH000002475.

This report has been prepared by HDFC Securities Ltd and is solely for information of the recipient only. The report must not be used as a singular basis of any investment decision. The views herein are of a general nature and do not consider the risk appetite or the particular circumstances of an individual investor; readers are requested to take professional advice before investing. "This report may have been refined using AI tools to enhance clarity and readability."

Nothing in this document should be construed as investment advice. Each recipient of this document should make such investigations as they deem necessary to arrive at an independent evaluation of an investment in securities of the companies referred to in this document (including merits and risks) and should consult their own advisors to determine merits and risks of such investment. The information and opinions contained herein have been compiled or arrived at, based upon information obtained in good faith from sources believed to be reliable. Such information has not been independently verified and no guaranty, representation of warranty, express or implied, is made as to its accuracy, completeness or correctness. All such information and opinions are subject to change without notice. Descriptions of any company or companies or their securities mentioned herein are not intended to be complete. HSL is not obliged to update this report for such changes. HSL has the right to make changes and modifications at any time.

This report is not directed to, or intended for display, downloading, printing, reproducing or for distribution to or use by, any person or entity who is a citizen or resident or located in any locality, state, country or other jurisdiction where such distribution, publication, reproduction, availability or use would be contrary to law or regulation or what would subject HSL or its affiliates to any registration or licensing requirement within such jurisdiction.

If this report is inadvertently sent or has reached any person in such country, especially, United States of America, the same should be ignored and brought to the attention of the sender. This document may not be reproduced, distributed or published in whole or in part, directly or indirectly, for any purposes or in any manner.

Foreign currencies denominated securities, wherever mentioned, are subject to exchange rate fluctuations, which could have an adverse effect on their value or price, or the income derived from them. In addition, investors in securities such as ADRs, the values of which are influenced by foreign currencies effectively assume currency risk. It should not be considered to be taken as an offer to

sell or a solicitation to buy any security.

This document is not, and should not, be construed as an offer or solicitation of an offer, to buy or sell any securities or other financial instruments. This report should not be construed as an invitation or solicitation to do business with HSL. HSL may from time to time solicit from, or perform broking, or other services for, any company mentioned in this mail and/or its attachments.

HSL and its affiliated company(ies), their directors and employees may; (a) from time to time, have a long or short position in, and buy or sell the securities of the company(ies) mentioned herein or (b) be engaged in any other transaction involving such securities and earn brokerage or other compensation or act as a market maker in the financial instruments of the company(ies) discussed herein or act as an advisor or lender/borrower to such company(ies) or may have any other potential conflict of interests with respect to any recommendation and other related information and opinions.

HSL, its directors, analysts or employees do not take any responsibility, financial or otherwise, of the losses or the damages sustained due to the investments made or any action taken on basis of this report, including but not restricted to, fluctuation in the prices of shares and bonds, changes in the currency rates, diminution in the NAVs, reduction in the dividend or income, etc.

HSL and other group companies, its directors, associates, employees may have various positions in any of the stocks, securities and financial instruments dealt in the report, or may make sell or purchase or other deals in these securities from time to time or may deal in other securities of the companies / organizations described in this report. As regards the associates of HSL please refer the website.

HSL or its associates might have managed or co-managed public offering of securities for the subject company or might have been mandated by the subject company for any other assignment in the past twelve months.

Please note that HDFC Securities has a proprietary trading desk. This desk maintains an arm's length distance with the Research team and all its activities are segregated from Research activities. The proprietary desk operates independently, potentially leading to investment decisions that may deviate from research views.

HSL or its associates might have received any compensation from the companies mentioned in the report during the period preceding twelve months from the date of this report for services in respect of managing or co-managing public offerings, corporate finance, investment banking or merchant banking, brokerage services or other advisory service in a merger or specific transaction in the normal course of business.

HSL or its analysts did not receive any compensation or other benefits from the companies mentioned in the report or third party in connection with preparation of the research report. Accordingly, neither HSL nor Research Analysts have any material conflict of interest at the time of publication of this report. Compensation of our Research Analysts is not based on any specific merchant banking, investment banking or brokerage service transactions. HSL may have issued other reports that are inconsistent with and reach different conclusion from the information presented in this report.

Research entity has not been engaged in market making activity for the subject company. Research analyst has not served as an officer, director or employee of the subject company. We have not received any compensation/benefits from the subject company or third party in connection with the Research Report.

HDFC securities Limited, I Think Techno Campus, Building - B, "Alpha", Office Floor 8, Near Kanjurmarg Station, Opp. Crompton Greaves, Kanjurmarg (East), Mumbai 400 042 Phone: (022) 3075 3400 Fax: (022) 2496 5066

Compliance Officer: Murli V Karkera Email: [complianceofficer@hdfcsec.com](mailto:complianceofficer@hdfcsec.com) Phone: (022) 3045 3600

For grievance redressal contact Customer Care Team Email: [customercare@hdfcsec.com](mailto:customercare@hdfcsec.com) Phone: (022) 3901 9400

HDFC Securities Limited, SEBI Reg. No.: NSE, BSE, MSEI, MCX: INZ000186937; AMFI Reg. No. ARN: 13549; PFRDA Reg. No. POP: 11092018; IRDA Corporate Agent License No.: CA0062; SEBI Research Analyst Reg. No.: INH000002475; SEBI Investment Adviser Reg. No.: INA000011538; CIN - U67120MH2000PLC152193

Investment in securities market are subject to market risks. Read all the related documents carefully before investing.

Mutual Funds Investments are subject to market risk. Please read the offer and scheme related documents carefully before investing.

Registration granted by SEBI, membership of BASL (in case of IAs) and certification from NISM in no way guarantee performance of the intermediary or provide any assurance of returns to investors.